

SYKES AND SON LTD.

BUILDERS
—
CONTRACTORS
—
DECORATORS



AN UP TO DATE
FIRM
OF
170 YEARS
STANDING



10 ESSEX STREET
STRAND W.C.
Phone: TEMPLE BAR
1491.



THE WATER GATE, ESSEX STREET.

A
BRIEF
~
HISTORICAL
~
SURVEY
~
1761
TO
1932
~

PAIN's BRITISH PALLADIO:

OR,

The Builder's General Assistant.

DEMONSTRATING,

IN THE MOST EASY AND PRACTICAL METHOD,

ALL THE

PRINCIPAL RULES OF ARCHITECTURE,

FROM THE

GROUND PLAN TO THE ORNAMENTAL FINISH.

ILLUSTRATED WITH

Several New and Useful DESIGNS OF HOUSES, with their Plans, Elevations, and Sections.

ALSO,

Clear and Ample INSTRUCTIONS, annexed to each Subject, in Letter-Press; with a List of Prices for Materials and Labour, and Labour only.

This Work will be universally useful to all CARPENTERS, BRICKLAYERS, MASONS, JOINERS, PLASTERERS, and others, concerned in the several Branches of Building, &c. comprehending the following Subjects, viz.

Plans, Elevations, and Sections, of Gentlemen's Houses.
Designs for Doors, Chimneys, and Cellars, with their proper
Establishments, in the most modern Taste.

A great Variety of Moldings, for Bels and Barbed Architraves,
Friezes, Pilasters, and Cornices, with their proper Orders,
for Pediments, Acanthus, or Half-Cap: To which are added, Seals
for Enlarging or lessening at Pleasure, if required.

Also, Great Variety of Plain-Cap, showing the practical
Method of executing them, in any Case required, viz. Groined,
Angle-Brackets, Circular Circular Flaming and Window

Selling, Domes, Sky-Lights, &c. all made plain and easy to
the meanest Capacity.

The Proportion of Windows for the Light to Rooms.
Preparing Foundations, the Proportion of Chimneys to Rooms,
and Sections of Floors.

The principal Timbers properly laid out on each Plan, with the
Manner of fitting the Rafters, and finding the Length and
Buckling of Hips, either square or bevel. Scantlings of the
Timbers, figured in Proportion to their Building. The Man-
ner of setting Girders, Beams, Poles, &c.

And many other Articles, particularly useful to all Persons in the BUILDING PROFESSION.

The Whole correctly Engraved on Forty-two Folio Copper-Plates, from the Original DESIGNS of
WILLIAM and JAMES PAIN.

LONDON:

Printed by H.D. STARR, in Lothbury, for the AUTHORS, at No. 2, Little Red-Lion-Court, Chancery-Lane,
near West-Smithfield.

M.DCC.LXXXVI.

PRICE SIXTEEN SHILLINGS IN SHEETS.

TABLE OF CONTENTS.

Plan, Page.	Plan, Page.
1 The design of a Gentleman's house, with the elevation, section, and plan of every part and roof.	1 The plan and elevation of a Gentleman's house.
2 The design of a Gentleman's house, with the elevation and section, and plan of every part and roof.	2 The plan, elevation, and section, and plan of every part and roof.
3 The design of a Gentleman's house, with the elevation and section, and plan of every part and roof.	3 The plan, elevation, and section, and plan of every part and roof.
4 The design of a Gentleman's house, with the elevation and section, and plan of every part and roof.	4 The plan, elevation, and section, and plan of every part and roof.
5 The design of a Gentleman's house, with the elevation and section, and plan of every part and roof.	5 The plan, elevation, and section, and plan of every part and roof.
6 The design of a Gentleman's house, with the elevation and section, and plan of every part and roof.	6 The plan, elevation, and section, and plan of every part and roof.
7 The design of a Gentleman's house, with the elevation and section, and plan of every part and roof.	7 The plan, elevation, and section, and plan of every part and roof.
8 The design of a Gentleman's house, with the elevation and section, and plan of every part and roof.	8 The plan, elevation, and section, and plan of every part and roof.
9 The design of a Gentleman's house, with the elevation and section, and plan of every part and roof.	9 The plan, elevation, and section, and plan of every part and roof.
10 The design of a Gentleman's house, with the elevation and section, and plan of every part and roof.	10 The plan, elevation, and section, and plan of every part and roof.
11 The design of a Gentleman's house, with the elevation and section, and plan of every part and roof.	11 The plan, elevation, and section, and plan of every part and roof.
12 The design of a Gentleman's house, with the elevation and section, and plan of every part and roof.	12 The plan, elevation, and section, and plan of every part and roof.
13 The design of a Gentleman's house, with the elevation and section, and plan of every part and roof.	13 The plan, elevation, and section, and plan of every part and roof.
14 The design of a Gentleman's house, with the elevation and section, and plan of every part and roof.	14 The plan, elevation, and section, and plan of every part and roof.
15 The design of a Gentleman's house, with the elevation and section, and plan of every part and roof.	15 The plan, elevation, and section, and plan of every part and roof.
16 The design of a Gentleman's house, with the elevation and section, and plan of every part and roof.	16 The plan, elevation, and section, and plan of every part and roof.
17 The design of a Gentleman's house, with the elevation and section, and plan of every part and roof.	17 The plan, elevation, and section, and plan of every part and roof.
18 The design of a Gentleman's house, with the elevation and section, and plan of every part and roof.	18 The plan, elevation, and section, and plan of every part and roof.
19 The design of a Gentleman's house, with the elevation and section, and plan of every part and roof.	19 The plan, elevation, and section, and plan of every part and roof.
20 The design of a Gentleman's house, with the elevation and section, and plan of every part and roof.	20 The plan, elevation, and section, and plan of every part and roof.
21 The design of a Gentleman's house, with the elevation and section, and plan of every part and roof.	21 The plan, elevation, and section, and plan of every part and roof.
22 The design of a Gentleman's house, with the elevation and section, and plan of every part and roof.	22 The plan, elevation, and section, and plan of every part and roof.

Price for Carpenter's Day-labour.	At per foot run.	At per foot run.
For each man per day	1	1
For every single butt	1	1
For a pair of Carpenters cutting all stuff, per day	2	2
For labour, per foot cube	1	1
Price, for saw and waste in flooring	1	1
Price, for good old fir timber	1	1
Price, for good old oak timber	1	1
Price, for new oak, in flooring not more than 12 feet and 10 inches square	1	1
Price, for new oak, six square	1	1

At per foot run.	At per foot run.
1 inch	1
2 inch	2
3 inch	3
4 inch	4
5 inch	5
6 inch	6
7 inch	7
8 inch	8
9 inch	9
10 inch	10
11 inch	11
12 inch	12
13 inch	13
14 inch	14
15 inch	15
16 inch	16
17 inch	17
18 inch	18
19 inch	19
20 inch	20
21 inch	21
22 inch	22
23 inch	23
24 inch	24
25 inch	25
26 inch	26
27 inch	27
28 inch	28
29 inch	29
30 inch	30
31 inch	31
32 inch	32
33 inch	33
34 inch	34
35 inch	35
36 inch	36
37 inch	37
38 inch	38
39 inch	39
40 inch	40
41 inch	41
42 inch	42
43 inch	43
44 inch	44
45 inch	45
46 inch	46
47 inch	47
48 inch	48
49 inch	49
50 inch	50
51 inch	51
52 inch	52
53 inch	53
54 inch	54
55 inch	55
56 inch	56
57 inch	57
58 inch	58
59 inch	59
60 inch	60
61 inch	61
62 inch	62
63 inch	63
64 inch	64
65 inch	65
66 inch	66
67 inch	67
68 inch	68
69 inch	69
70 inch	70
71 inch	71
72 inch	72
73 inch	73
74 inch	74
75 inch	75
76 inch	76
77 inch	77
78 inch	78
79 inch	79
80 inch	80
81 inch	81
82 inch	82
83 inch	83
84 inch	84
85 inch	85
86 inch	86
87 inch	87
88 inch	88
89 inch	89
90 inch	90
91 inch	91
92 inch	92
93 inch	93
94 inch	94
95 inch	95
96 inch	96
97 inch	97
98 inch	98
99 inch	99
100 inch	100


At per foot run.	At per foot run.
1 inch	1
2 inch	2
3 inch	3
4 inch	4
5 inch	5
6 inch	6
7 inch	7
8 inch	8
9 inch	9
10 inch	10
11 inch	11
12 inch	12
13 inch	13
14 inch	14
15 inch	15
16 inch	16
17 inch	17
18 inch	18
19 inch	19
20 inch	20
21 inch	21
22 inch	22
23 inch	23
24 inch	24
25 inch	25
26 inch	26
27 inch	27
28 inch	28
29 inch	29
30 inch	30
31 inch	31
32 inch	32
33 inch	33
34 inch	34
35 inch	35
36 inch	36
37 inch	37
38 inch	38
39 inch	39
40 inch	40
41 inch	41
42 inch	42
43 inch	43
44 inch	44
45 inch	45
46 inch	46
47 inch	47
48 inch	48
49 inch	49
50 inch	50
51 inch	51
52 inch	52
53 inch	53
54 inch	54
55 inch	55
56 inch	56
57 inch	57
58 inch	58
59 inch	59
60 inch	60
61 inch	61
62 inch	62
63 inch	63
64 inch	64
65 inch	65
66 inch	66
67 inch	67
68 inch	68
69 inch	69
70 inch	70
71 inch	71
72 inch	72
73 inch	73
74 inch	74
75 inch	75
76 inch	76
77 inch	77
78 inch	78
79 inch	79
80 inch	80
81 inch	81
82 inch	82
83 inch	83
84 inch	84
85 inch	85
86 inch	86
87 inch	87
88 inch	88
89 inch	89
90 inch	90
91 inch	91
92 inch	92
93 inch	93
94 inch	94
95 inch	95
96 inch	96
97 inch	97
98 inch	98
99 inch	99
100 inch	100

At per foot run.	At per foot run.
1 inch	1
2 inch	2
3 inch	3
4 inch	4
5 inch	5
6 inch	6
7 inch	7
8 inch	8
9 inch	9
10 inch	10
11 inch	11
12 inch	12
13 inch	13
14 inch	14
15 inch	15
16 inch	16
17 inch	17
18 inch	18
19 inch	19
20 inch	20
21 inch	21
22 inch	22
23 inch	23
24 inch	24
25 inch	25
26 inch	26
27 inch	27
28 inch	28
29 inch	29
30 inch	30
31 inch	31
32 inch	32
33 inch	33
34 inch	34
35 inch	35
36 inch	36
37 inch	37
38 inch	38
39 inch	39
40 inch	40
41 inch	41
42 inch	42
43 inch	43
44 inch	44
45 inch	45
46 inch	46
47 inch	47
48 inch	48
49 inch	49
50 inch	50
51 inch	51
52 inch	52
53 inch	53
54 inch	54
55 inch	55
56 inch	56
57 inch	57
58 inch	58
59 inch	59
60 inch	60
61 inch	61
62 inch	62
63 inch	63
64 inch	64
65 inch	65
66 inch	66
67 inch	67
68 inch	68
69 inch	69
70 inch	70
71 inch	71
72 inch	72
73 inch	73
74 inch	74
75 inch	75
76 inch	76
77 inch	77
78 inch	78
79 inch	79
80 inch	80
81 inch	81
82 inch	82
83 inch	83
84 inch	84
85 inch	85
86 inch	86
87 inch	87
88 inch	88
89 inch	89
90 inch	90
91 inch	91
92 inch	92
93 inch	93
94 inch	94
95 inch	95
96 inch	96
97 inch	97
98 inch	98
99 inch	99
100 inch	100

At per foot run.	At per foot run.
1 inch	1
2 inch	2
3 inch	3
4 inch	4
5 inch	5
6 inch	6
7 inch	7
8 inch	8
9 inch	9
10 inch	10
11 inch	11
12 inch	12
13 inch	13
14 inch	14
15 inch	15
16 inch	16
17 inch	17
18 inch	18
19 inch	19
20 inch	20
21 inch	21
22 inch	22
23 inch	23
24 inch	24
25 inch	25
26 inch	26
27 inch	27
28 inch	28
29 inch	29
30 inch	30
31 inch	31
32 inch	32
33 inch	33
34 inch	34
35 inch	35
36 inch	36
37 inch	37
38 inch	38
39 inch	39
40 inch	40
41 inch	41
42 inch	42
43 inch	43
44 inch	44
45 inch	45
46 inch	46
47 inch	47
48 inch	48
49 inch	49
50 inch	50
51 inch	51
52 inch	52
53 inch	53
54 inch	54
55 inch	55
56 inch	56
57 inch	57
58 inch	58
59 inch	59
60 inch	60
61 inch	61
62 inch	62
63 inch	63
64 inch	64
65 inch	65
66 inch	66
67 inch	67
68 inch	68
69 inch	69
70 inch	70
71 inch	71
72 inch	72
73 inch	73
74 inch	74
75 inch	75
76 inch	76
77 inch	77
78 inch	78
79 inch	79
80 inch	80
81 inch	81
82 inch	82
83 inch	83
84 inch	84
85 inch	85
86 inch	86
87 inch	87
88 inch	88
89 inch	89
90 inch	90
91 inch	91
92 inch	92
93 inch	93
94 inch	94
95 inch	95
96 inch	96
97 inch	97
98 inch	98
99 inch	99
100 inch	100

For 14 feet board, from 2 1/2" to 4 1/2" —————	0	4 1/2	board.
For 12 feet, from 4 1/2" to 6 1/2" —————	0	6 1/2	
Yellow white sand Rusting boards, well prepared, fit for laying,			
10 feet, from 2 1/2" to 3 1/2" —————	1	3 1/2	
12 feet, from 3 1/2" to 4 1/2" —————	1	4 1/2	
14 feet, from 4 1/2" to 5 1/2" —————	1	5 1/2	
per board.			
4 1/2 inches, per pair —————	0	4 1/2	
5 inches —————	0	5	
6 inches —————	0	6	
7 inches —————	0	7	
8 inches —————	0	8	
9 inches —————	0	9	
10 inches —————	0	10	
11 inches —————	0	11	
12 inches —————	0	12	
13 inches —————	0	13	
14 inches —————	0	14	
15 inches —————	0	15	
16 inches —————	0	16	
17 inches —————	0	17	
18 inches —————	0	18	
19 inches —————	0	19	
20 inches —————	0	20	
21 inches —————	0	21	
22 inches —————	0	22	
23 inches —————	0	23	
24 inches —————	0	24	
25 inches —————	0	25	
26 inches —————	0	26	
27 inches —————	0	27	
28 inches —————	0	28	
29 inches —————	0	29	
30 inches —————	0	30	
31 inches —————	0	31	
32 inches —————	0	32	
33 inches —————	0	33	
34 inches —————	0	34	
35 inches —————	0	35	
36 inches —————	0	36	
37 inches —————	0	37	
38 inches —————	0	38	
39 inches —————	0	39	
40 inches —————	0	40	
41 inches —————	0	41	
42 inches —————	0	42	
43 inches —————	0	43	
44 inches —————	0	44	
45 inches —————	0	45	
46 inches —————	0	46	
47 inches —————	0	47	
48 inches —————	0	48	
49 inches —————	0	49	
50 inches —————	0	50	
51 inches —————	0	51	
52 inches —————	0	52	
53 inches —————	0	53	
54 inches —————	0	54	
55 inches —————	0	55	
56 inches —————	0	56	
57 inches —————	0	57	
58 inches —————	0	58	
59 inches —————	0	59	
60 inches —————	0	60	
61 inches —————	0	61	
62 inches —————	0	62	
63 inches —————	0	63	
64 inches —————	0	64	
65 inches —————	0	65	
66 inches —————	0	66	
67 inches —————	0	67	
68 inches —————	0	68	
69 inches —————	0	69	
70 inches —————	0	70	
71 inches —————	0	71	
72 inches —————	0	72	
73 inches —————	0	73	
74 inches —————	0	74	
75 inches —————	0	75	
76 inches —————	0	76	
77 inches —————	0	77	
78 inches —————	0	78	
79 inches —————	0	79	
80 inches —————	0	80	
81 inches —————	0	81	
82 inches —————	0	82	
83 inches —————	0	83	
84 inches —————	0	84	
85 inches —————	0	85	
86 inches —————	0	86	
87 inches —————	0	87	
88 inches —————	0	88	
89 inches —————	0	89	
90 inches —————	0	90	
91 inches —————	0	91	
92 inches —————	0	92	
93 inches —————	0	93	
94 inches —————	0	94	
95 inches —————	0	95	
96 inches —————	0	96	
97 inches —————	0	97	
98 inches —————	0	98	
99 inches —————	0	99	
100 inches —————	0	100	

FOREWORD

UR object in issuing this " Brochure " is to record in as few words as possible, together with an occasional illustration, events in our Record of 170 years Trading. The Firm was originally established by Henry Sykes in Essex Street One Hundred and Seventy years back. It has carried on the business of Builders uninterruptedly, is still in the forefront, and has during that long period found its home in Essex Street, and its work amongst its ever-increasing number of satisfied clients. It has, of course, seen very many and great changes. The old and picturesque Holywell and Wych Streets have given way to Aldwych and the Strand widening. The Law Courts have taken the place of many an interesting Court and Building. Temple Bar has had to give way to the more modern and much less pleasing Griffin. It is extremely interesting to thus look back and note the changes, in many of which we have taken an active part. For instance, the small Tenement Houses originally forming Arundel, Surrey, and Norfolk Streets, had to give way to the present fine buildings many of which were erected under the supervision of a member of our Firm, as was Craven House, the first of the New Buildings

Foreword—*contd.*

erected in record time from Designs by Sir Henry Tanner just before the closing of streets required for the new Avenue of Kingsway, which "Way" and other Demolitions swept away many an interesting and Historic Building, and some of course, less worthy of note, as for instance, an ancient vaulted cockpit unearthed by us when excavating for our First New Building in old Drury Lane, later demolished at the formation of Aldwych. Essex Street itself has changed, and is still undergoing changes. The old Water Gate shewn on the frontispiece and slightly restored by us, remains to remind one of the far-distant days when the Thames flowed where Electric Trains now run, and licked the steps leading up into Essex Street. The Building in which we now house our Office Staff was built by us on the site of a very old house, every floor of which was occupied by our craftsmen, now removed to far more commodious premises near by.

SYKES & SON, LTD.

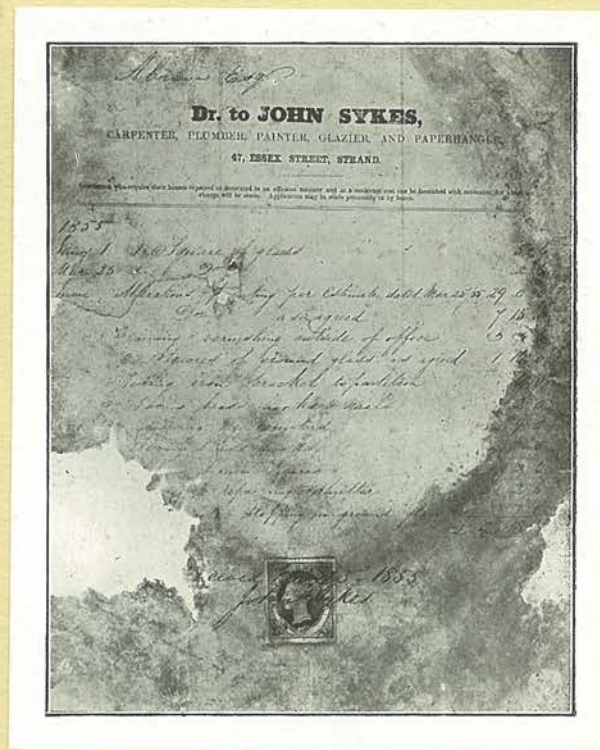


CRAVEN HOUSE.

Historic.

Very many of the alterations and changes in Buildings in our immediate neighbourhood were entrusted to Our Firm. In effecting one of these changes to an old house close by, an original account for work done was found behind some wall panelling our workmen were removing. The print shews this, and though stained by age and partly destroyed is interesting, as is also the title page and first page of prices of our Earliest Price Book, evidently a forerunner of Laxtons. It will be noted the date of Publication is 1786, and has therefore been in the Firm's possession for 140 years. It will be noted that Labour (Carpenter) at 4d. per hour is somewhat less than the rate paid in this year of grace, but singularly, the cost of materials then has a levelling effect, and brings cost within measurable distance of costs to-day.

In such a lengthy (and may we say good) record, it is only to be expected that Our Firm should have been invited by Architects and satisfied Clients to scenes far removed from home, to record even a tithe of the work thus accomplished would need a very much larger volume than the one in which we have gathered together a few of the more interesting contracts.



⊕ from designs and under the supervision of Sir Raymond Unwin

Constructional and Public Works.



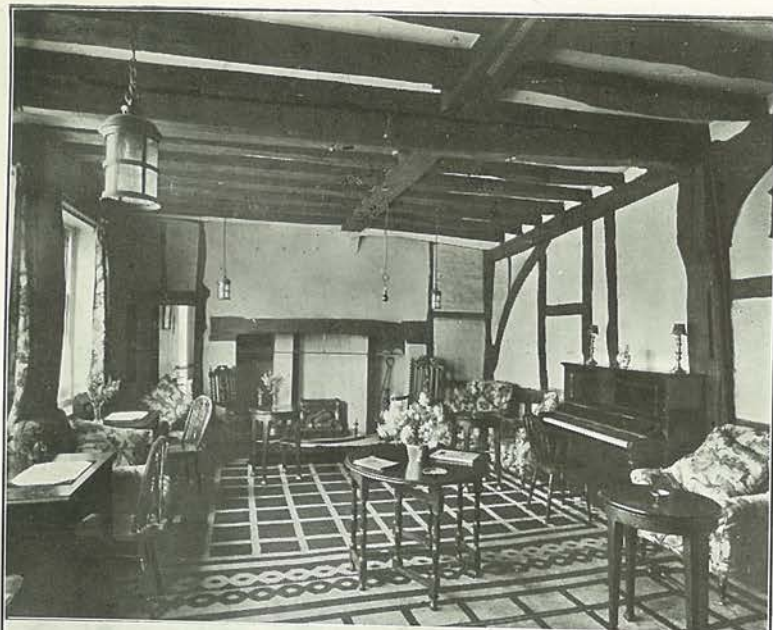
BURWOOD HOUSE.

ERECTED UNDER THE SUPERVISION
AND FROM THE DESIGNS OF
GEO: VERNON ESQ. ARCHITECT

In Constructional work the Firm has done much, from housing schemes at Leigh in Kent to Scotland in the Far North, from Craven House already mentioned in Kingsway to the latest a very fine block of offices in Caxton Street, Westminster, known as Burwood House.

In Public Works the Firm has had a fair share, the most important, perhaps, being the Huge Military Camp at Catterick (Yorkshire) and the High Explosives Factory at Gretna and Eastriggs, in which we shared with a London and a Midland firm. The Aerodrome, too, at Keston, Kent, came in part under our Staff for construction.





Alterations, Reparations, and Restorations to the Antique.

In the Restoration and Renewal of Ancient Buildings, we have had a large experience. For instance, the old Posting Houses at Crawley, Braintree, Horsham, Dorking, etc., etc., were entrusted to our care for alteration and restoration and the preservation of their antiquity by Trust Houses Ltd., for whom our Firm over a number of years carried out extensive additions, alterations, and reparations.

The George at Crawley, surely known by every lover of the Antique, was entirely rehabilitated by us; its charming quaintness and old air of comfort being carefully retained, whilst adding up-to-date comforts. The Billiards Room here was formed in an old-world Cottage, and the Smoke Lounge in a "dug out," both of which are very quaint and very "comfy."



Reparations, etc., to the Antique.

The Black Horse at Horsham was very extensively altered and added to by us, an Hotel wing of many Bedrooms and other Hotel Accessories being added, which together with alterations to and the inclusion of the Old Corn Exchange on the High Street front reconstructed as Dining, Reception, Conference Rooms, etc., makes a very fine block of Buildings, replete with every modern comfort.

Our Blocks shew :

1. Dining Room and Staircases leading to Conference and other Rooms.
2. Elevations of Old Corn Exchange and Old Black Horse and New Hotel Wing.
3. Dining Room from Gallery.



THE BLACK HORSE. HORSHAM

Picture Galleries.

The Decoration of Picture Galleries, too, has engaged our attention, notably the Tate and National Galleries. At the latter we were entrusted with a specially-designed colour scheme for the Reubens Cartoon Room.

Coats of Arms.

Finer specimens of our Artistry are to be found in the Middle Temple, where for many years we made and our Artists emblazoned the Coats of Arms and particulars of the Readers of the Inn (two of whom are appointed each year) from designs prepared by the Royal College of Heraldry. The block shewn is that of Sir Rufus Isaacs. *now the Marquis of Reading*



COAT OF ARMS -
MIDDLE TEMPLE

Heraldry.

We shew on this page a view of the north-west corner of the 3-century old Hall of the Middle Temple, a very beautiful building in which these tablets are hung and form part of the panelling.

Craftsmanship.

Our Craftsmen, too, have for well over a century, been engaged in special and ordinary repair work for the Benchers of the Inn. Perhaps the most interesting example is the Oaken Bookcase which stands in the Old Parliament Chamber of Middle Temple Hall. The Oak used by our joiners in the making of this fitting was anciently part of a bridge crossing the Thames from the end of Middle



N.W. CORNER - MIDDLE TEMPLE HALL

Temple Lane at the time of the Knights Templars. The Bridge was restored by Edward III in 1331, and again by the Societies of the Inner and Middle Temples with the aid of Queen Elizabeth in 1561.



OAK BOOKCASE. - MIDDLE TEMPLE

This Historic Bridge was once the Highway to the woods on the south bank of the River, where the Barristers of that day were wont to hunt. The Warders on duty would sound their Horns from the Bridge to recall the Huntsmen to Dinner in the Hall. This Horn, by the way, is still a treasured relic of the Benchers. A brass Tablet on the front of the Bookcase records this interesting fact.



LIBRARY-MIDDLE TEMPLE

Cabinet & Restoration Work.

Our blocks shew the interior and roof of the Historic and Fine Old Library of the Middle Temple in and for which our Joiners have carried out some very beautiful work all in oak, the Cabinet seen above in the Corridor (a larger view of which we

shew on next page) was made by our Craftsmen from portions of the old oak before mentioned. The Bookcases and Shelving are all of wainscot oak, and though in a well warmed and dry building shew no signs of shrinkage. The fine old Roof shewn below was many years back thoroughly overhauled and made good by us.

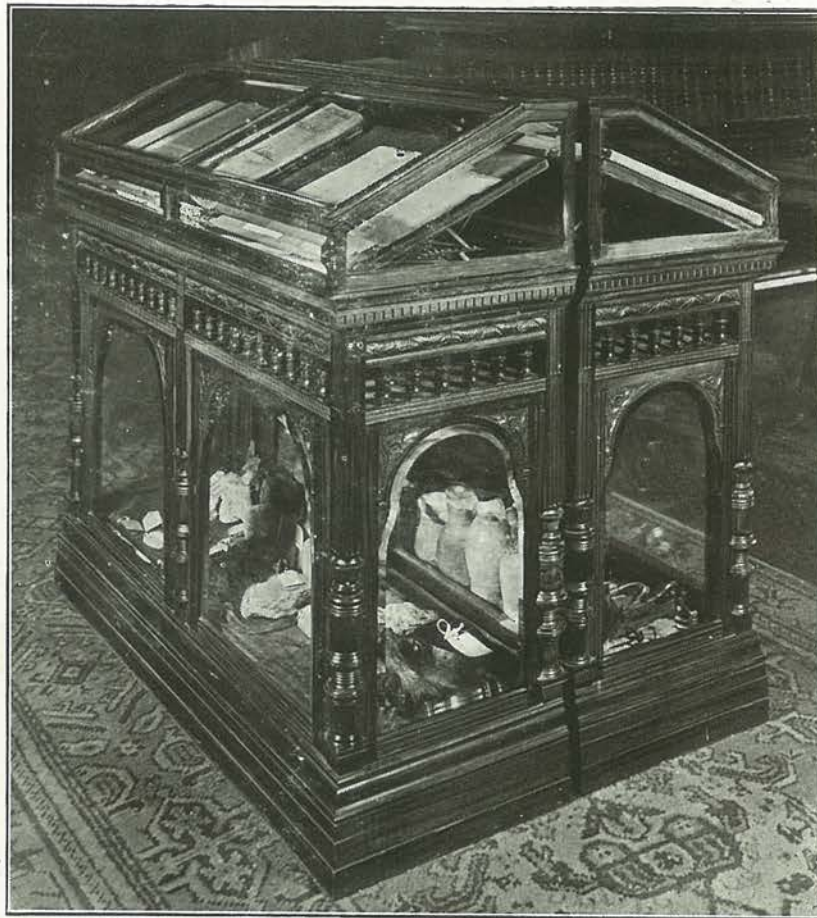


LIBRARY ROOF

③ the Report of the Death of Mary Queen of Scots sent to Queen Elizabeth; the Order for the British Army to Advance at Waterloo; and a Charter granted to the Temple by George the First

Cabinet Work.

This block shews an enlarged view of the Cabinet mentioned on previous page, made from very Old Historic Oak in our own Workshops. It is a very fine specimen of workmanship, shewing no signs whatever of shrinkage or other defect. The curios exhibited are ? ? ? (X)



CABINET - TEMPLE LIBRARY

Decorations.

In later years whilst not neglecting the Constructional, we have concentrated and specialized more upon the Decorative side of our Business, and in this connection have carried out many important schemes, notably the special preparations and decorations required at the "Home Office" for the signing of the Locarno Treaty. Here we were entrusted with the work by H.M.O.W. under the direction of Sir Edwin Lutyens and the Committee specially appointed to design and supervise the decorative schemes which were carried out by our own Skilled Workmen in Gold Leaf and Colour.

Decorations.

THE RECEPTION ROOM.

Situated between the Conference and Assembly Rooms, picked out in Gold and Colour, and walls hung with Crimson Silk Brocade.



RECEPTION ROOM.



CONFERENCE ROOM.

THE CONFERENCE ROOM.

A very fine room with elaborate ceiling.



ASSEMBLY ROOM.

H.M. HOME OFFICE

Decorations.

The very fine block of Buildings in Cromwell Road, Kensington, known as the Victoria and Albert Museum, have been entirely re-decorated by us. We print two views of portions of the Interior, the view below being of a side gallery shewing the State Barge and the very fine old shop front of "Birch's" removed from Cornhill.

For this work we designed and erected special scaffolding seen above, enabling us to reach over and



VICTORIA AND ALBERT MUSEUM



above the exhibits without touching walls, and reaching high up into the Dome or Vaulted Ceiling, being made in bays and on which our workmen were able to move entire sections as necessary to carry out the decoration and other work necessary without injury to the very valuable and delicate exhibits.

Decorations.



Our picture of Frogmore House, Windsor Great Park,
is a good example of modern work executed by us.



The Firm to-day is still young and virile, carrying out many important Contracts, is able and willing to quote for all classes of Building and Decorative Work in Town or Country, and whilst thanking its many Patrons for favours already conferred, looks forward not only to a continuance but to an ever-increasing and widening circle of satisfied clients. The Staff are ever ready to advise in any Building or Decorative scheme, large or small, or to carry out work of the plainest or most intricate description from the Designs of Architects or Artists.